



## **SCATTINI CONSTRUCTION PTY LTD**

Scattini Construction is an Open Class builder capable of delivering a wide variety of commercial and industrial projects.

Our recent industrial projects include tilt panel warehouse and office developments, production facilities, and distribution centres.

Our experience covers all aspects of building an industrial premises including, civil & structural works, fire suppression systems, loading docks, cranes, HVAC, data and electrical, cold rooms, fit outs including commercial kitchens and laboratories.

We have an extensive network of subcontractors and suppliers who can satisfy any built requirement.

Scattini Construction has the commitment and expertise to safely deliver a quality product at an affordable price whether it be a new build, fit out or refurbishment.

Contact Bob Scattini 0411 238 025 any time to discuss your project.

## References

Dan Felton	Felton Property Group	0408 480 087
Adrian Spencer	Pradella Developments	0417 454 056
Giorgio Giaroli	Developer	0417 753 244
Simon Fuhrmann	FP Solutions	0404 472 627
Chris Gray	OPD	0418 756 592
James Park	Centennial Properties	0408 733 956

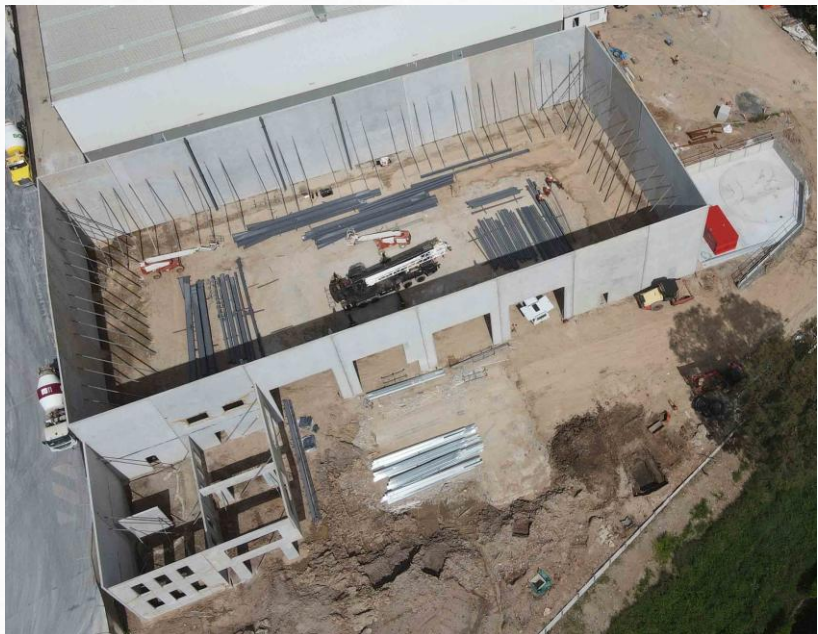
## Selected industrial & commercial projects

### Centennial Property Group 980 Lytton Road, Murarrie

11440 m<sup>2</sup> site with 1830 m<sup>2</sup> warehouse and two-level office.

#### Scope

Construction, fit out, fire suppression system, hardstand and all services. Retro-fit existing building with fire suppression system.







### 12-14 Helium St, Narangba

10800 m<sup>2</sup> site with 2870 m<sup>2</sup> double compartment warehouse with sliding fire doors and two-level office.

#### **Scope**

Construction, fit out, hardstand, civil works, including 4 m high boulder retaining wall, 4 m high engaged pier block work retaining wall, concrete sleeper retaining walls, stormwater detention and filtering.



**Lot 27 Mineral Sizer court, Narangba**

1400 m<sup>2</sup> warehouse & office.

**Scope**

Design & construct, all site works including stormwater filtration & hardstand.

**69 Cerina Circuit, Jimboomba  
Stage Two - Jimboomba Health Connect**

1100 m<sup>2</sup> commercial/allied health.

**Scope**

Base build, civil works including road widening, stormwater filtration & detention.

**Lot 7 Adler Circuit, Yarrabilba**

650 m<sup>2</sup> double storey allied health consulting rooms.

**Scope**

Base build, civil works, allied health fit out inc. lift and consulting rooms.

**10-14 Pinacle St, Brendale**

2500 m<sup>2</sup> Industrial building with office.

**Scope**

Expansion & refurbishment of existing warehouse & office.

**25 Silvio St Richlands**

3000 m<sup>2</sup> warehouse and office.

**Scope**

Construction & all site works.

### **472 Newman Rd, Geebung**

3800 m<sup>2</sup> warehouse with two storey office.

#### **Scope**

Base build, civil works inc. road widening, stormwater filtration & detention, office fit-out, loading dock & sprinkler system.

### **69 Cerina Circuit**

#### **Stage One - Jimboomba Health Connect**

2 x 500 m<sup>2</sup> medical centre with doctors' surgery & allied health rooms.

#### **Scope**

Construction & all site works inc. earthworks, service upgrades and connections.

### **CSR**

#### **15 Mineral Sizer Court, Narangba**

8000 m<sup>2</sup> site with 2500 m<sup>2</sup> warehouse and retail showroom.

#### **Scope**

Construction & site works, hardstands, fire services.

### **Pine Valley Flowers**

#### **Lot 8, 133 South Pine Rd Brendale**

5000 m<sup>2</sup> production facility with large cold rooms.

#### **Scope**

Construction & site works including sprinkler system, loading docks, cold rooms & mechanical services, and office fit out.



## 89-115 Frederick St Northgate

22000 m<sup>2</sup> site with 3 x 4000 m<sup>2</sup> warehouses and two level office.

### **Scope**

Demolition of existing buildings, base build, civil works, stormwater filtration & detention. A complex site with challenging geotechnical conditions.



## **Starbucks, Subway & World Gym Brendale**

2500 m<sup>2</sup> two level gym with offices, speciality rooms and associated services, 400 m<sup>2</sup> showroom, Starbucks fit-out & drive-through.

### **Scope**

Design, construct & all site works.



## **Tritium & associated Energex sub-station 48 Miller St, Murarrie**

Base build for EV charging testing facility with Energex sub-station and office. Tight construction site, business in operation during construction, large power requirements.

### **Scope**

Construction & all site works.

## **Lot 6 Mineral Sizer Court, Narangba**

3000 m<sup>2</sup> warehouse with large fire doors & clear span and double storey office.

### **Scope**

Construction & site works inc. stormwater filtration and handstands.



**4x4 SupaCentre distribution centre  
Lot 3 Belconnen Cres Brendale**

22000 m<sup>2</sup> site with 9000 m<sup>2</sup> warehouse & 300 m<sup>2</sup> office.

**Scope**

Construction & all site works, fire sprinklers, loading docks & hardstand.





### **4x4 SupaCentre showroom - Cnr Kremzow Rd & Mackay St Brendale**

3000 m<sup>2</sup> GFA on 6000 m<sup>2</sup> site. Corporate head office, warehouse, workshop and showroom.

#### **Scope**

Construction & all site works.

### **Metalflex warehouse - Lot 17 Mineral Sizer Court, Narangba**

1500 m<sup>2</sup> warehouse & office on 4000m<sup>2</sup> site.

#### **Scope**

Construction & all site works.



**BioHawk commercial food production**  
**16 Whitelaw Place, Richlands**

1500 m<sup>2</sup> production facility & office on 3000 m<sup>2</sup> site.

**Scope**

Construction & all site works including 1200 m<sup>2</sup> of cold rooms and freezers, graded floors & trade waste. Food grade specification.

**252 Earnshaw Rd, Northgate - subdivision and buildings**

8100 m<sup>2</sup> Industrial subdivision

**Scope**

Bulk earthworks, stormwater, electrical, sewer & road works.

Construction:

- Lot 2 – 1750 m<sup>2</sup> double storey office & warehouse with overhead gantry crane.
- Lot 3 – 1600 m<sup>2</sup> office and small warehouse development with six units having double storey offices.

**Pazstone production facility**  
**Lot 6, 133 South Pine Rd, Brendale**

3800 m<sup>2</sup> production facility & office on 8000 m<sup>2</sup> site.

**Scope**

Construction & site works, including overhead cranes, floor drainage & services to suit production machinery.

**Nick Scali warehouse extension**  
**16 Mineral Sizer Court, Narangba**

500 m<sup>2</sup> warehouse extension.

**Scope**

Construction & site works including fire suppression modifications and fire appliance access road.



**Gerflor**  
**2 Kingsbury St, Brendale**

3300 m<sup>2</sup> warehouse and office.

**Scope**

Construction & site works.

**40 Counihan Rd, Seventeen Mile Rocks**

6000 m<sup>2</sup> site with 32 industrial work store units.

**Scope**

Construction & site works.

**Dalsteel**  
**Lot 11, 62 Crockford St, Banyo**

1700 m<sup>2</sup> warehouse and office.

**Scope**

Construction & site works.

**42 Walker St, Tennyson**

3600 m<sup>2</sup> site with 21 industrial units.

**Scope**

Construction and site works.

**Lot 7, 133 South Pine Rd, Brendale**

2400 m<sup>2</sup> industrial storage shed.

**Scope**

Construction and site works including sprinkler system, fit out, mechanical services, electrical, data and plumbing services, car parks, and landscaping.

**Lot 3, 133 South Pine Rd, Brendale**

2500 m<sup>2</sup> two storey tilt panel office and warehouse.

**Scope**

Construction, fit out, all services, road works, car parks, and landscaping.

**Weatherford laboratory, corporate office & warehouse  
Leitchs Rd, Brendale**

4500 m<sup>2</sup> warehouse, laboratory, and two storey tilt panel office.

**Scope**

Construction, extensive HVAC and services to laboratory areas, fit out purpose built to exacting requirements. All data, electrical & security, trade waste & plumbing structural elements, roads, car parks, and landscaping.

**67 Depot St, Banyo**

6400 m<sup>2</sup> site with 3 stand-alone, two storey office blocks covering 4000 m<sup>2</sup>.

**Scope**

Construction, fit outs, mechanical services, electrical, data and plumbing services, car parks, and landscaping.

**Retailquip  
215 Leitchs Rd, Brendale**

Double storey tilt panel office and warehouse.

**Scope**

Together with fit out, mechanical services, electrical, data and plumbing services, car parks, landscaping and associated works.

**Britax  
2 Garret St, Brendale**

Double storey office and warehouse.

**Scope**

Tilt panel construction, large sliding fire doors, fit out, data & electrical, car parks, and landscaping.



### **All Tools**

#### **Lot 2 Leitchs Rd, Brendale**

2500 m<sup>2</sup> warehouse units with Two double storey tilt panel offices.

#### **Scope**

Together with fit out, mechanical services, electrical, data and plumbing services, car parks, and landscaping.

#### **Lot 3 Leitchs Rd, Brendale**

1700 m<sup>2</sup> six warehouse units with two storey tilt panel offices.

#### **Scope**

Construction, fit out, mechanical services, electrical, data and plumbing services, car parks, and landscaping.

### **Remote area mine work**

Contracted to Q Birt Civil engineers for Rio Tinto, Arrow Energy, QGC, MRM and Thiess. Provide all materials, labour and small plant. All mobilisation, marshalling and transport of men, materials and plant. Strict compliance with mine site safety rules - no LTI or incidents on any job.

## Contact details

Scattini Construction Pty Ltd

PO Box 313  
Paddington  
Queensland 4064

Phone: 0411 238 025 (Bob Scattini)  
[bob@scattiniconstruction.com.au](mailto:bob@scattiniconstruction.com.au)

QBCC No.: 1142 759  
ABN: 12 131 148 091

[www.scattiniconstruction.com.au](http://www.scattiniconstruction.com.au)

